



# One Earth Solar Farm

**Volume 6.0 Environmental Statement [EN010159]**

**Volume 3**

**Figure 8.1: Study Area**

**Figure 8.2: Landfill sites, waste management sites and sites of potential contamination**

**Figure 8.3: Bedrock geological units and geological hazards**

**Figure 8.4: Superficial geological units and geological hazards**

**Figure 8.5: Mineral extraction sites and mineral safeguarding areas**

**Figure 8.6: ALC survey results**

**Figure 8.7: Groundwater abstraction points**

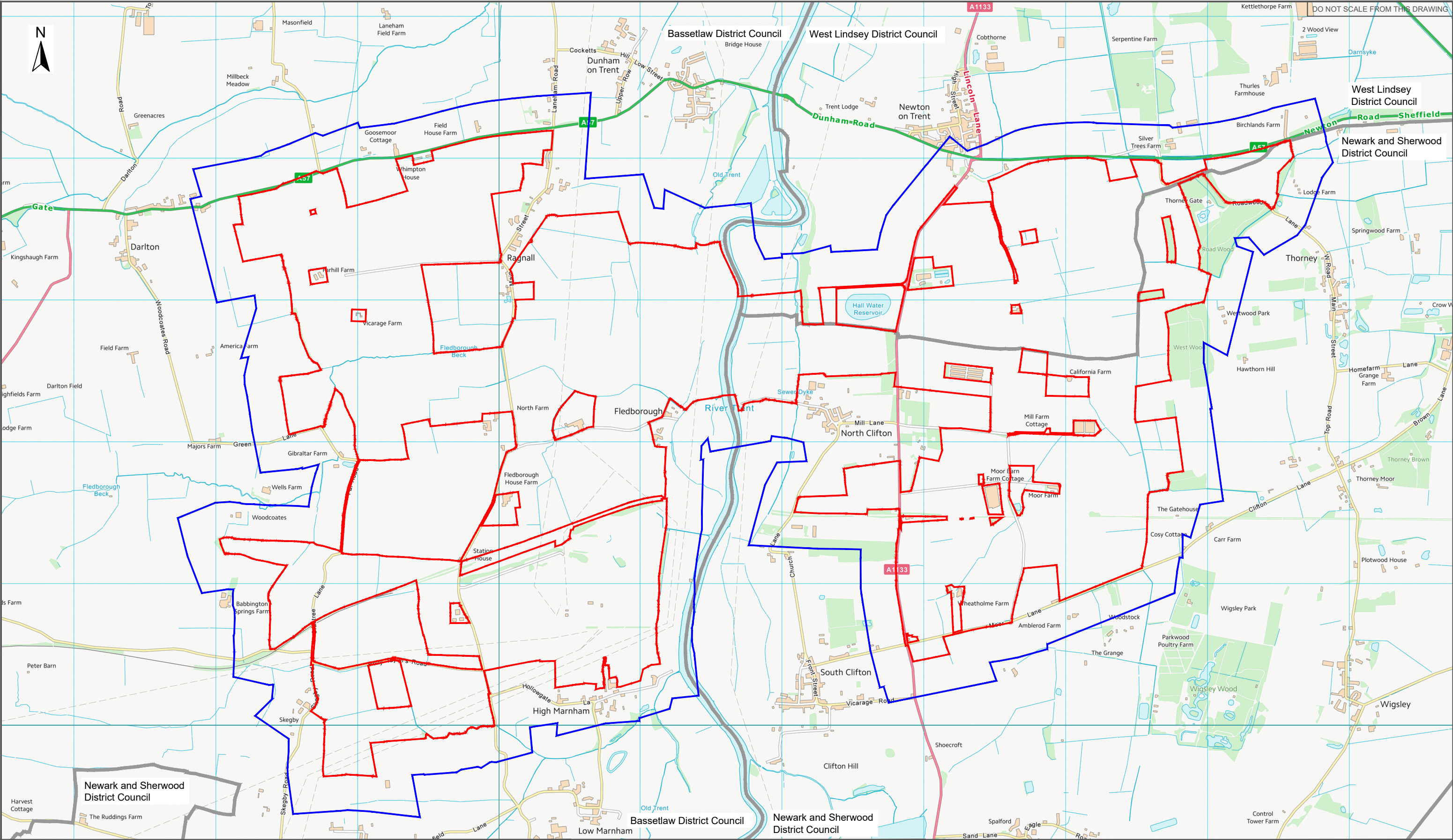
**February 2025**

Document Reference: EN010159/APP/6.20

Revision 01

Infrastructure Planning (Applications: Prescribed Forms and Procedure) Regulations 2009  
- Reg 5 (2) (a)



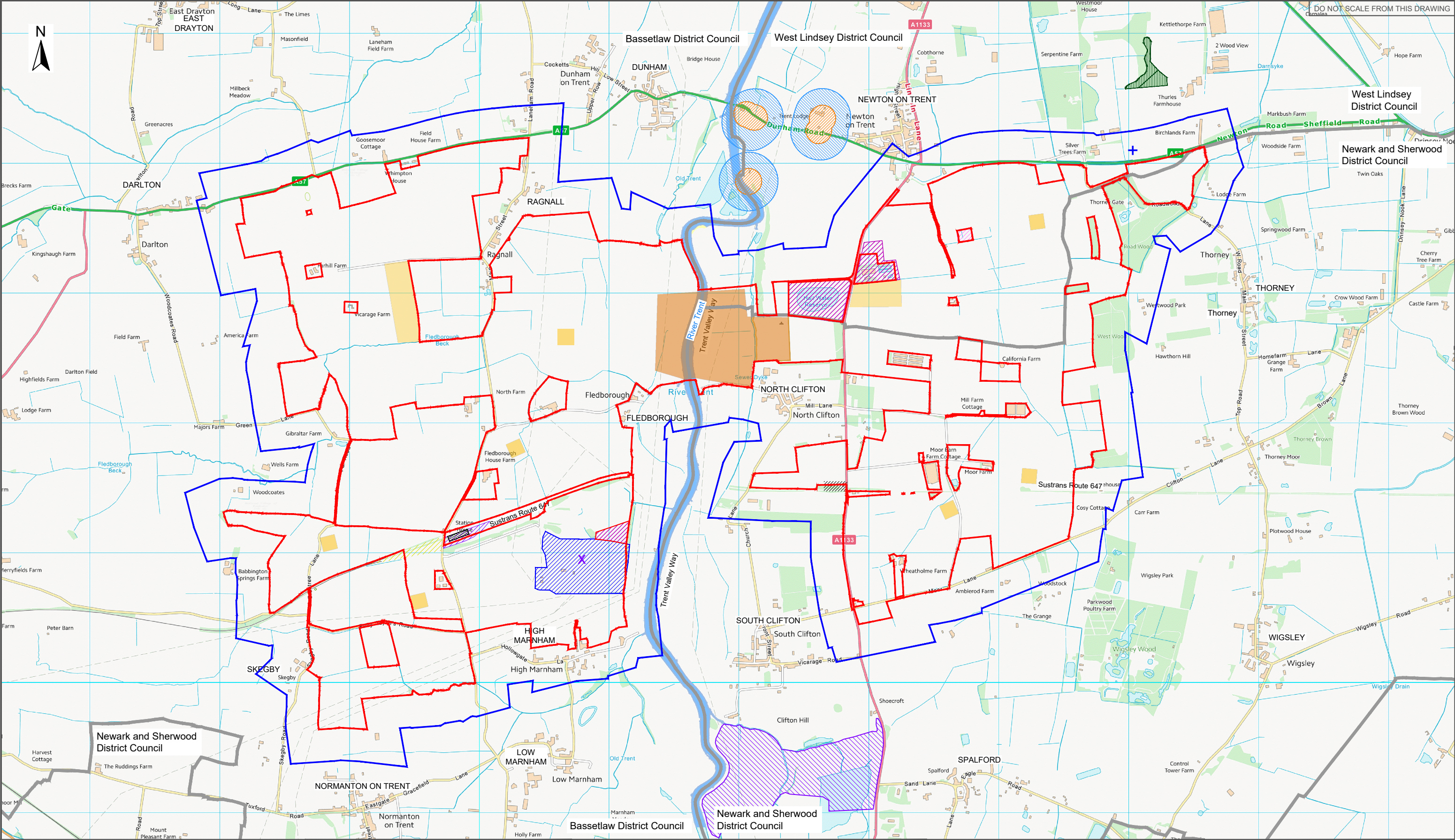


Client	One Earth Solar Farm Ltd
Project Name	One Earth Solar Farm
Planning Inspection Scheme Ref:	EN010159
Environmental Statement Volume-	2

Drawing Title		Figure 8.1 Study Area
Drawing Number	EN010159/APP/6.20/8.1	Revision
		C02
Drawing Date		10.02.2025

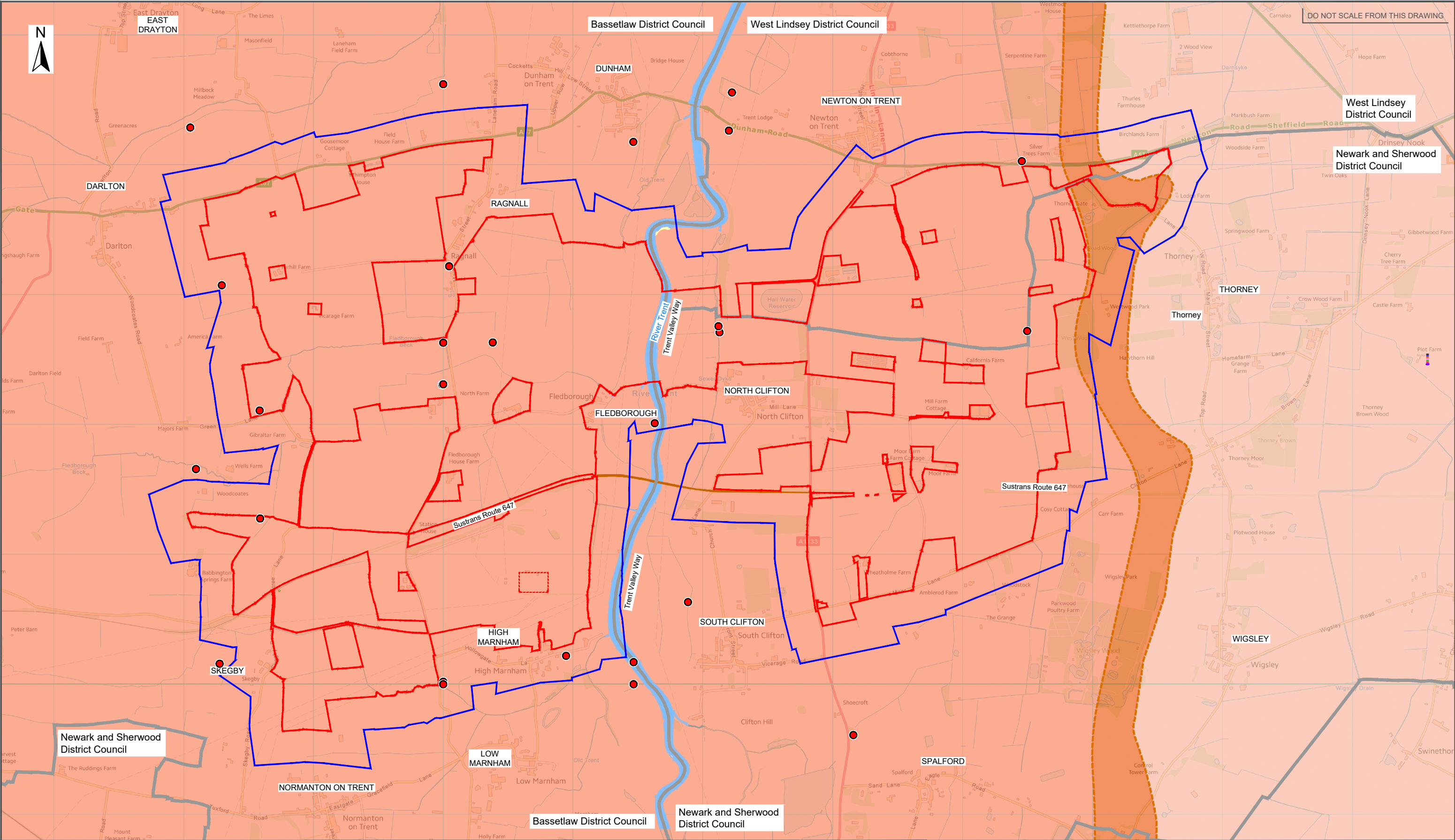
Legend:
<div></div> Order Limits
<div></div> Study Area (250m buffer outside Order Limits)
<div></div> Boundary of district borough unitary region






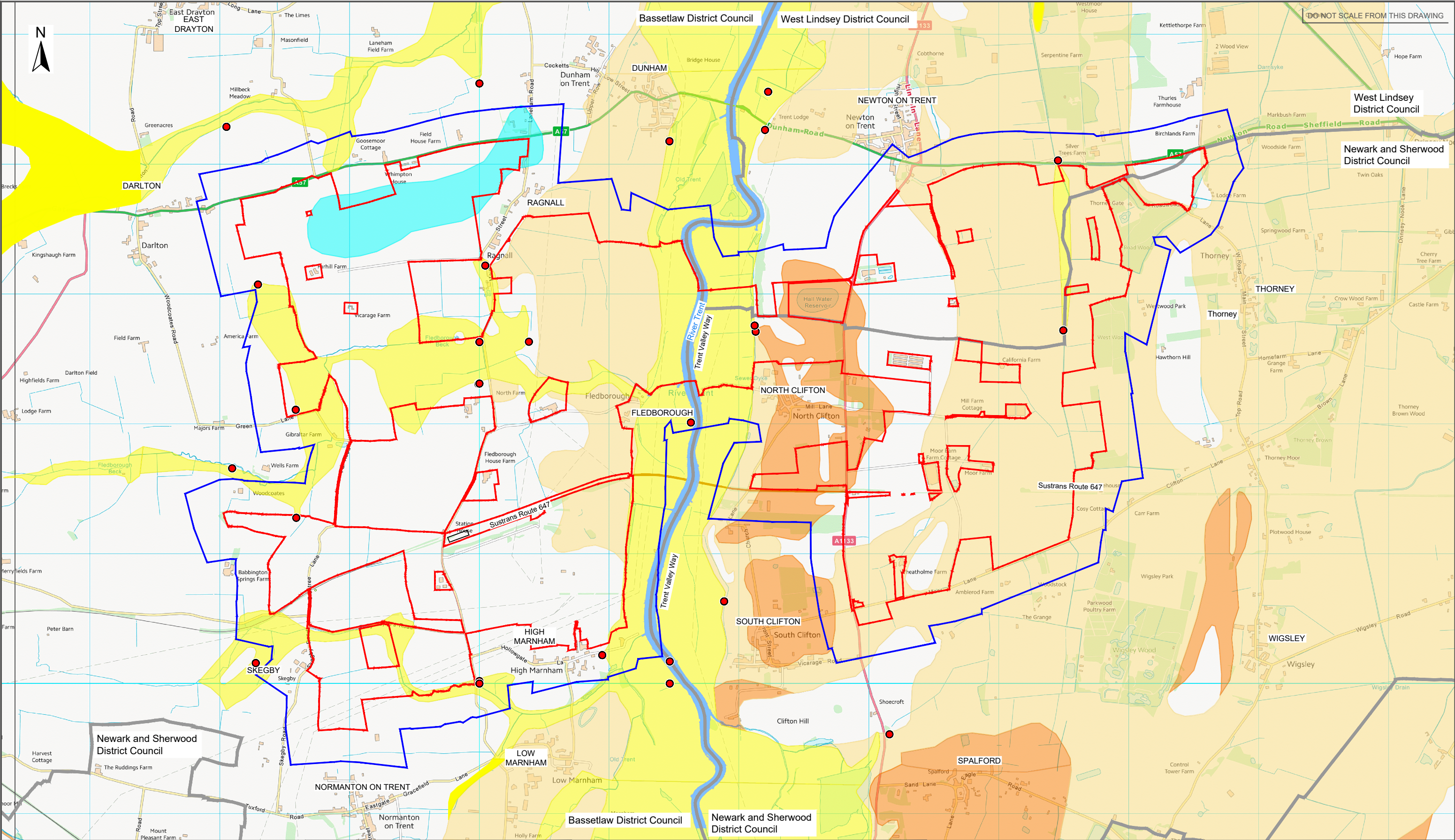
	Client		Drawing Title		Legend:	
	One Earth Solar Farm Ltd		Figure 8.2 Landfill Sites, Waste Management Sites and Sites of Potential Contamination			
	Project Name		Drawing Number		<div><div></div>Order limits</div> <div><div></div>Route of Historical Railway</div> <div><div></div>Study Area (250m buffer outside Order Limits)</div> <div><div></div>Boundary of district borough unitary region</div> <div><div></div>Location of Historical Railway Station</div> <div><div></div>Location of High Marnham Power Station</div> <div><div></div>Location of water treatment works</div> <div><div></div>Location of oil well compound</div> <div><div></div>Location of pumping station</div> <div><div></div>Location of Historical landfill site</div> <div><div>X</div>Location of Historical waste management facility (Point location, not site area)</div> <div><div>+</div>Location of licensed waste management facility</div>	
	One Earth Solar Farm		Revision			
	EN010159/APP/6.20/8.2		C02			
Planning Inspection Scheme Ref:EN010159		Drawing Date				
Environmental Statement Volume-2		10.02.2025				





	Client		Drawing Title		<p>Legend:</p> <ul style="list-style-type: none"><li><span style="color: red;">—</span> Order limits</li><li><span style="color: blue;">—</span> Study Area (250m buffer outside Order Limits)</li><li><span style="color: grey;">—</span> Boundary of district borough unitary region</li><li><span style="color: red;">●</span> Geological hazards from compressible ground (moderate risk)</li></ul> <p><u>Bedrock Geology</u></p> <ul style="list-style-type: none"><li><span style="background-color: #f9d7d7; border: 1px solid black; display: inline-block; width: 20px; height: 10px;"></span> Sandstone Mudstone formation</li><li><span style="background-color: #f4a460; border: 1px solid black; display: inline-block; width: 20px; height: 10px;"></span> Penarth Group - Mudstone</li><li><span style="background-color: #f9d7d7; border: 1px solid black; display: inline-block; width: 20px; height: 10px;"></span> Mercia Mudstone Group</li></ul>
	One Earth Solar Farm Ltd		Figure 8.3 Bedrock Geological Units and Geological Hazards		
	Project Name		Drawing Number	Revision	
	One Earth Solar Farm		EN010159/APP/6.20/8.3	C02	
	Planning Inspection Scheme Ref:EN010159		Drawing Date		
Environmental Statement Volume-2		10.02.2025			



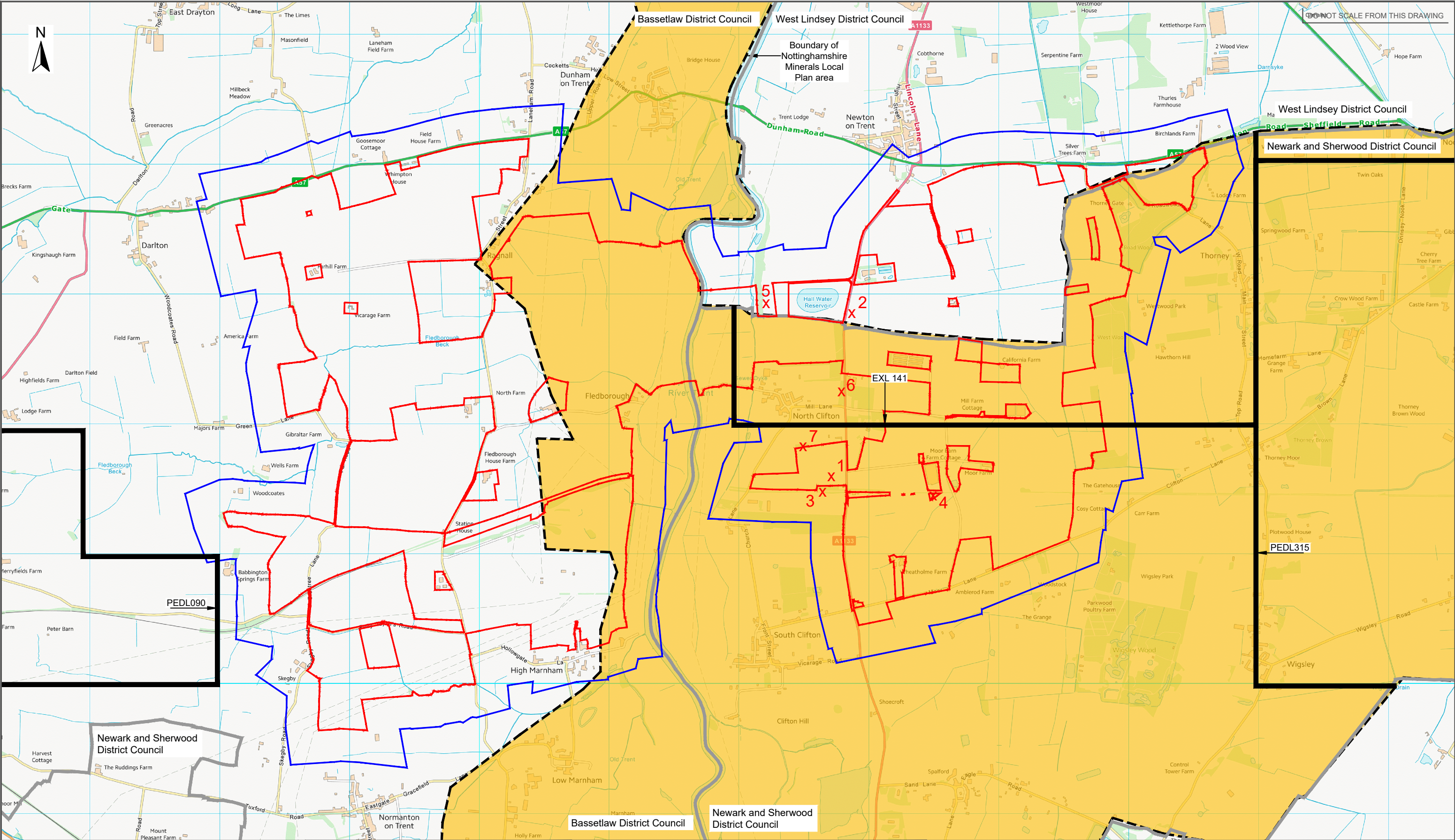


Client	One Earth Solar Farm Ltd
Project Name	One Earth Solar Farm
Planning Inspection Scheme Ref:	EN010159
Environmental Statement Volume-	2

Drawing Title	
Figure 8.4 Superficial Geological Units and Geological Hazards	
Drawing Number	Revision
EN010159/APP/6.20/8.4	C02
Drawing Date	
10.02.2025	

Legend:
<span style="color: red;">—</span> Order limits
<span style="color: blue;">—</span> Study Area (250m buffer outside Order Limits)
<span style="color: grey;">—</span> Boundary of district borough unitary region
<span style="color: red;">●</span> Geological hazards from compressible ground (moderate risk)
<u>Superficial Deposits</u>
<span style="background-color: yellow;"> </span> Alluvium - Clay, Silt, Sand and Gravel
<span style="background-color: orange;"> </span> Holme Pierrepoint Sand and Gravel Member - Sand and Gravel
<span style="background-color: lightorange;"> </span> Blown Sand - Sand
<span style="background-color: cyan;"> </span> Till, Mid Pleistocene, Diamicton



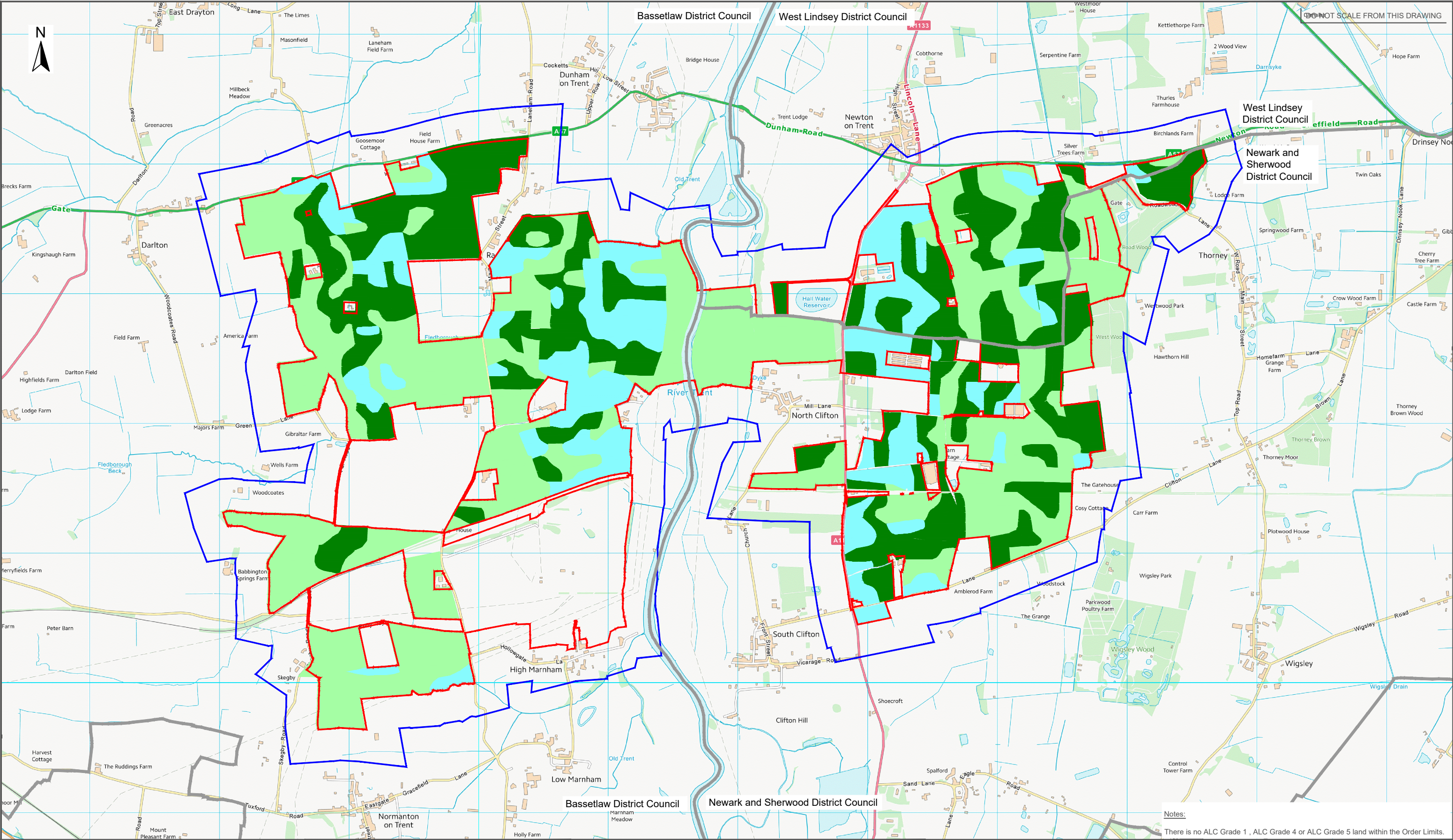



Client	One Earth Solar Farm Ltd
Project Name	One Earth Solar Farm
Planning Inspection Scheme Ref:	EN010159
Environmental Statement Volume-	2

Drawing Title	
Figure 8.5 Mineral Extraction Sites and Mineral Safeguarding Areas	
Drawing Number	Revision
EN010159/APP/6.20/8.5	C02
Drawing Date	
10.02.2025	

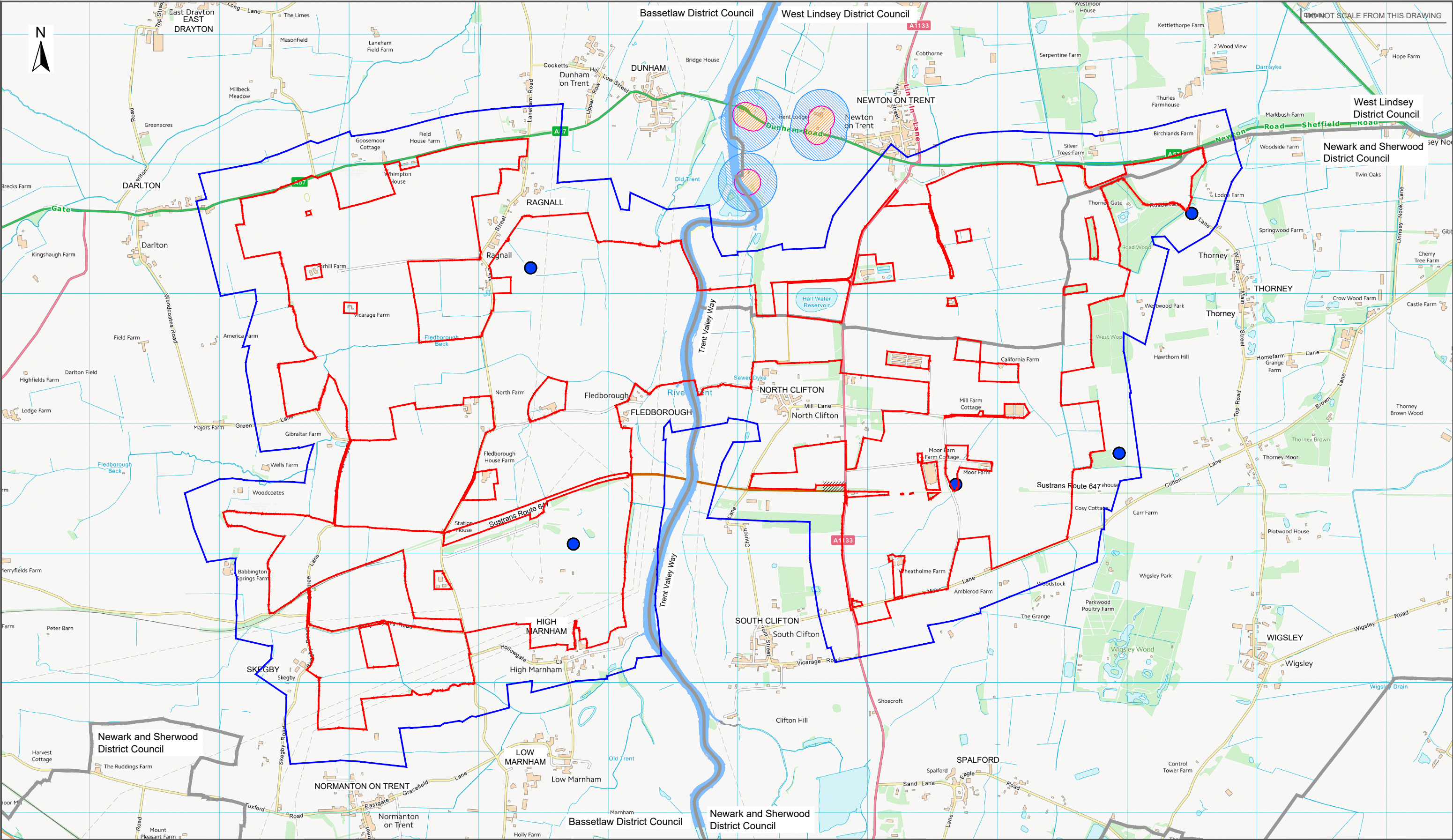
Legend:	Names of historical mineral site ( see section 8.4.25, Chapter 8, Environmental Statement Volume 2)
Order limits	1 - Station Sand Pit
Study Area (250m buffer outside Order Limits)	2 - Windmill Pits
Boundary of district borough unitary region	3 - Station Gravel Pit (1)
Mothballed quarry with permission for further sand and gravel extraction (Girton)	4 - Station Gravel Pit (2)
Location of historical mineral site	5 - Newton Cliff Quarries
Sand and Gravel Mineral Safeguarding and conciliation area .	6 - North Clifton Pits
PEDL: Petroleum exploration and development licence are;	7 - Hall Farm Pit
EXL: Exploration licence area	






	Client		Drawing Title		<p>Legend:</p> <div><div></div> Order limits</div> <div><div></div> Study Area (250m buffer outside Order Limits)</div> <div><div></div> Boundary of district borough unitary region</div> <p>ALC Grades</p> <div><div></div> 2</div> <div><div></div> 3a</div> <div><div></div> 3b</div>
	One Earth Solar Farm Ltd		Figure 8.6 ALC Survey Results		
	Project Name		Drawing Number		
	One Earth Solar Farm		EN010159/APP/6.20/8.6		
	Planning Inspection Scheme Ref:EN010159		Revision		
Environmental Statement Volume-2		C02			
		Drawing Date			
		10.02.2025			





	Client		Drawing Title		<p>Legend:</p> <p>Order limits</p> <p>Study Area (250m buffer outside Order Limits)</p> <p>Boundary of district borough unitary region</p> <p><u>Groundwater abstraction source protection zones</u></p> <p>Outer zone-subsurface activity only (Zone 2c)</p> <p>Inner zone-subsurface activity only (Zone 1c)</p> <p>Active groundwater abstraction points</p>
	One Earth Solar Farm Ltd		Figure 8.7 Groundwater Abstraction Points		
	Project Name		Drawing Number	Revision	
	One Earth Solar Farm		EN010159/APP/6.20/8.7	C02	
	Planning Inspection Scheme Ref:EN010159		Drawing Date		
	Environmental Statement Volume-2		10.02.2025		